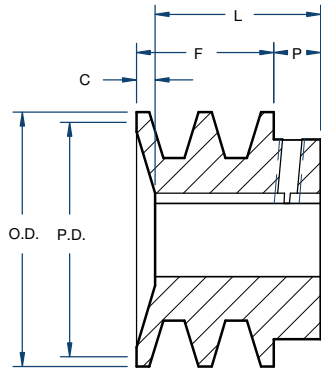


Sheaves

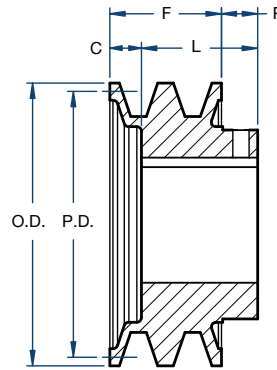
2AK STYLE



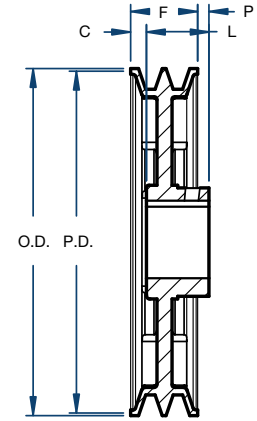
BLACKSTAR®



Type 1



Type 2



Type 3

Part No.	Diameter (in)			Type	Stock Bores Marked (x) (in)										Dimensions (in)				Approx. Weight (lbs)
	Outside	Pitch 4L/A	Pitch 5L/B		1/2	5/8	3/4	7/8	15/16	1	1-1/8	1-3/16	1-3/8	1-7/16	F	L	P	C	
2AK20	2.00	1.80	1.46	1	x	x	x	—	—	—	—	—	—	—	1-3/8	1-21/32	15/32	3/16	0.8
2AK21	2.15	1.90	1.56	1	x	x	x	—	—	—	—	—	—	—	1-3/8	1-21/32	15/32	3/16	0.9
2AK22	2.25	2.00	1.66	1	x	x	x	x	—	—	—	—	—	—	1-3/8	1-21/32	15/32	3/16	0.9
2AK23	2.35	2.10	1.76	1	—	x	x	x	—	x	—	—	—	—	1-3/8	1-21/32	15/32	3/16	1.1
2AK25	2.55	2.30	1.96	1	—	x	x	x	—	x	—	—	—	—	1-3/8	1-21/32	15/32	3/16	1.3
2AK26	2.65	2.40	2.06	1	—	x	x	x	—	x	—	—	—	—	1-3/8	1-21/32	15/32	3/16	1.4
2AK27	2.75	2.50	2.16	1	—	x	x	x	—	x	—	—	—	—	1-3/8	1-21/32	15/32	3/16	1.5
2AK28	2.85	2.60	2.26	1	—	x	x	x	—	x	—	—	—	—	1-3/8	1-21/32	15/32	3/16	1.8
2AK30	3.05	2.80	2.46	1	x	x	x	x	—	x	x	—	—	—	1-3/8	1-21/32	15/32	3/16	1.8
2AK32	3.25	3.00	2.66	1	—	x	x	x	—	x	x	—	—	—	1-3/8	1-21/32	15/32	3/16	2.1
2AK34	3.45	3.20	2.86	1	—	x	x	x	—	x	x	—	—	—	1-3/8	1-21/32	15/32	3/16	2.3
2AK39	3.75	3.50	3.16	2	—	x	x	x	—	x	x	—	—	—	1-3/8	1-11/32	15/32	1/2	2.6
2AK41	3.95	3.70	3.36	2	—	x	x	x	—	x	x	—	—	—	1-3/8	1-11/32	15/32	1/2	2.9
2AK44	4.25	4.00	3.66	2	—	x	x	x	—	x	x	—	—	—	1-3/8	1-11/32	15/32	1/2	3.0
2AK46	4.45	4.20	3.86	2	—	—	—	x	—	x	x	—	—	—	1-3/8	1-11/32	15/32	1/2	3.1
2AK49	4.75	4.50	4.16	2	—	—	x	x	—	x	x	—	x	—	1-3/8	1-11/32	15/32	1/2	3.6
2AK51	4.95	4.70	4.36	2	—	—	x	x	—	x	x	—	x	—	1-3/8	1-11/32	15/32	1/2	3.8
2AK54	5.25	5.00	4.66	3	—	x	x	x	—	x	x	—	x	—	1-3/8	1-11/32	15/32	1/2	3.3
2AK56	5.45	5.20	4.86	3	—	x	x	—	—	x	x	—	x	—	1-3/8	1-11/32	15/32	1/2	3.4
2AK59	5.75	5.50	5.16	3	—	—	—	—	—	x	x	—	x	—	1-3/8	1-11/32	15/32	1/2	3.5
2AK61	5.95	5.70	5.36	3	—	—	x	x	—	x	x	—	x	—	1-3/8	1-11/32	15/32	1/2	3.6
2AK64	6.25	6.00	5.66	3	—	—	x	—	—	x	x	x	x	x	1-3/8	1-19/32	11/32	1/8	4.8
2AK74	7.25	7.00	6.66	3	—	—	x	—	—	x	x	x	x	x	1-3/8	1-19/32	11/32	1/8	5.6
2AK84	8.25	8.00	7.66	3	—	—	x	—	x	x	x	x	x	x	1-3/8	1-19/32	11/32	1/8	6.4
2AK94	9.25	9.00	8.66	3	—	—	x	—	—	x	x	x	x	x	1-3/8	1-19/32	11/32	1/8	7.3
2AK104	10.25	10.00	9.66	3	—	—	x	—	x	x	—	—	x	—	1-3/8	1-19/32	11/32	1/8	8.1
2AK114	11.25	11.00	10.66	3	—	—	x	—	—	x	—	x	x	x	1-3/8	1-19/32	11/32	1/8	9.0
2AK124	12.25	12.00	11.66	3	—	—	x	—	—	x	—	x	—	x	1-3/8	1-19/32	11/32	1/8	9.8
2AK134	13.25	13.00	12.66	3	—	—	—	—	—	—	—	x	—	x	1-3/8	1-19/32	11/32	1/8	12.3
2AK144	14.25	14.00	13.66	3	—	—	—	—	—	x	—	—	—	x	1-3/8	1-19/32	11/32	1/8	13.9
2AK154	15.25	15.00	14.66	3	—	—	—	—	—	—	—	x	—	x	1-3/8	1-19/32	11/32	1/8	14.3
2AK184	18.25	18.00	17.66	3	—	—	—	—	—	—	—	x	—	x	1-3/8	1-19/32	11/32	1/8	17.4